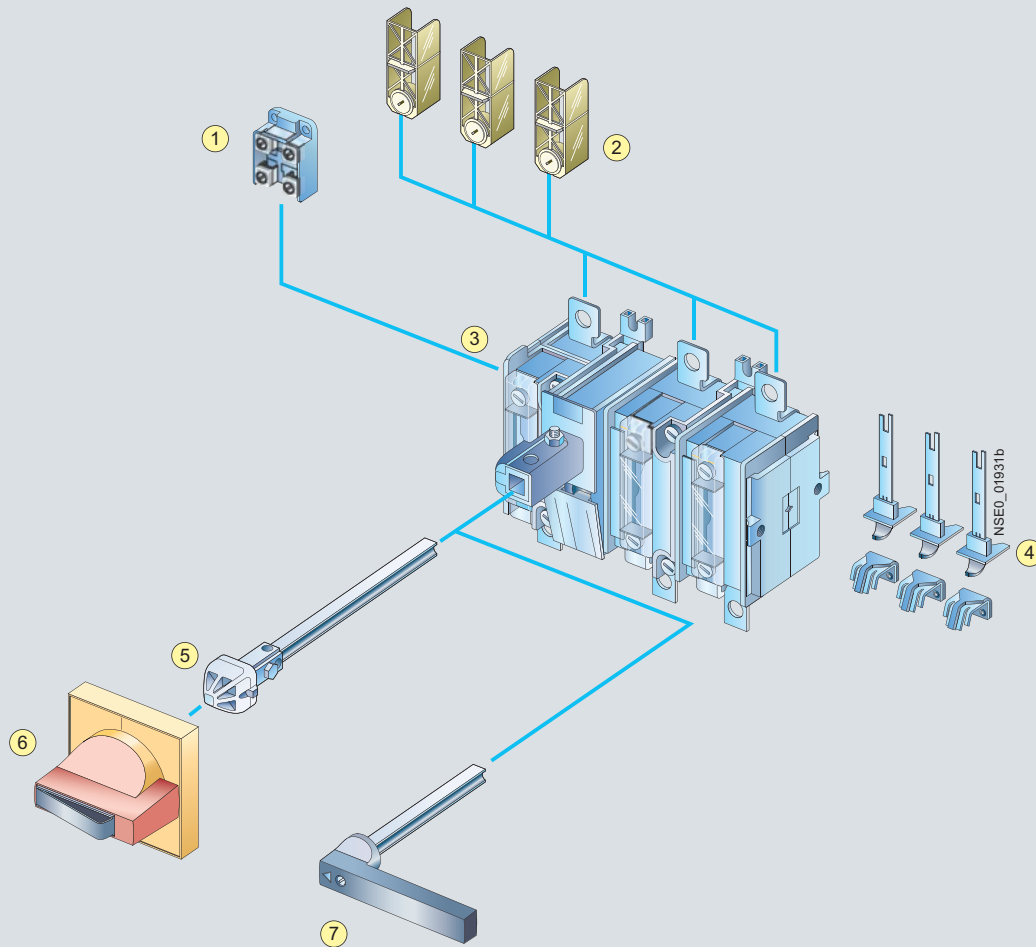


Switch Disconnectors, Main and EMERGENCY-STOP Switches

SENTRON 3KA, 3KE Switch Disconnectors up to 1000 A

General data

Overview



- ① Auxiliary switch (3SB for 3KA; 3KX for 3KE)
- ② IP20 terminal cover (Operator side)
- ③ 3K switch disconnector
- ④ Arcing contacts (only for 3KE)
- ⑤ Extension shaft
- ⑥ 8UC7 door-coupling rotary operating mechanism in standard version (ti-grey) or EMERGENCY-STOP version (red/yellow).
- ⑦ 8UC9 knob for fixed mounting in standard version (black) or EMERGENCY-STOP version (red/yellow).

All components from the switch to the actuator are provided with non-interchangeability features.

For the 3KA switch disconnectors, complete kits for standard and EMERGENCY-STOP application are available for installation in the side and rear panels of control cabinets.

A changeover operating mechanism is available for the use of 2 switch disconnectors in the 3KE series as load changeover switches.

An operating linkage permits simultaneous switching of two 3KE switch disconnectors with identical or different rated operational currents.

Identical accessories for 3KA switch disconnectors and for 3KL and 3KM switch disconnectors with fuses simplify stock keeping.

Application

3KA and 3KE switch disconnectors are used as main, EMERGENCY-STOP, maintenance and transfer switches in distribution boards for residential and non-residential buildings as well as industrial switchboards. As three and four-pole versions, they ensure activation and deactivation of the specified rated current under load. At the same time, they constitute a safety isolating function and isolating distance in all low-voltage circuits.

All 3K switch disconnectors are climate-proof and meet the requirements of IEC 60947-1, IEC 60947-3 and VDE 0660 Part 107. Switch disconnectors in the type-tested 8HP molded-plastic distribution board enclosure (degree of protection IP65) are available for use as safety switches.

More information can be found in the Catalog ET A1 "ALPHA Distribution Boards and Terminal Blocks".

Switch Disconnectors, Main and EMERGENCY-STOP Switches

SENTRON 3KA, 3KE Switch Disconnectors up to 1000 A

General data

More information

Standards	IEC 60947-1, IEC 60947-3, VDE 0660 Part 107							
	Type	3KA50	3KA51	3KA52 ¹⁾	3KA53 ¹⁾	3KA55 ¹⁾	3KA57 ¹⁾	3KA58 ¹⁾
Rated uninterrupted current I_u	A	63	80	125	160	250	400	630 ³⁾
Conventional free-air thermal current I_{th}²⁾	A	63	80	125	160	250	400	630 ³⁾
Rated insulation voltage U_i	V	690	690	1000	1000	1000	1000	1000
Rated impulse voltage U_{imp}	kV	6	6	8	8	8	8	8
Rated operational voltage U_e								
AC 50 Hz/60 Hz	V	690						
DC	V	440 (3 conducting paths series-connected)						
	V	220 (2 conducting paths series-connected)						
	V	110 (1 conducting path)						
Rated short-circuit making capacity I_{cm} with upstream fuses⁴⁾	kA	220	220	220	220	176	176	105
At 50 Hz/60 Hz 690 V AC, peak value								
Rated conditional short-circuit current with upstream fuses⁴⁾	kA	100	100	100	100	80	80	50
At 50 Hz/60 Hz 690 V AC, rms value								
Max. rated current I_n of the fuses	A	63	80	160	160	400	400	630
Permissible let-through current of the fuses	kA	8	10	17	17	30 ⁵⁾	30 ⁵⁾	40 ⁵⁾
Maximum permissible let-through I^2t value	kA ² s	55	55	223	223	1000	1000	2600
Permissible let-through current of an upstream circuit breaker	kA	7	8	8	15	25	25	32
At 50 Hz/60 Hz 690 V AC, peak value								
Rated short-circuit making capacity without fuses	kA	7	7	7	9	20	25	35
At 50 Hz/60 Hz 690 V AC, peak value								
Switching capacity (infeed from the top or bottom)								
At 400 V AC								
• Breaking current I_C (at p.f. = 0.35, rms value)	A	500	650	1000	1280	2000	3200	5040
• Rated operational current I_e at								
- AC-21A, AC-22A, AC-23A	A	63	80	125	160	250	400	630 ⁶⁾
• Motor switching capacity AC-23A	kW	30	40	65	80	132	200	350
At 500 V AC								
• Breaking current I_C (at p.f. = 0.35, rms value)	A	500	640	1000	1280	2000	3200	3200
• Rated operational current I_e at								
- AC-21A, AC-22A	A	63	80	125	160	250	400	630
- AC-23A	A	63	80	125	160	250	400	400
• Motor switching capacity AC-23A	kW	40	50	90	110	185	280	280
At 690 V AC								
• Breaking current I_C (at p.f. = 0.35, rms value)	A	500	500	1000	1280	2000	3200	3200
• Rated operational current I_e at								
- AC-21A, AC-22A	A	63	80	125	160	250	400	630
- AC-23A	A	63	63	125	160	250	400	400
• Motor switching capacity AC-23A	kW	50	50	110	150	220	375	375
At 440 V DC (3 conducting paths series-connected) ⁷⁾								
• Breaking current I_C ($L/R = 15$ ms)	A	250	260	500	640	1000 ⁹⁾	1600	1600
• Rated operational current I_e at DC-23A	A	63	63	125	160	250 ⁹⁾	400	400
Rated short-time current I_{cw} (1 s current, rms value)	kA	2.5	2.5	3.2	3.2	8	11	15
Permissible ambient temperature	°C	-25 ... +55 for operation ³⁾						
	°C	-50 ... +80 when stored						
Mechanical endurance , operating cycles		15000	15000	15000	15000	12000	12000	12000
Degree of protection		IP00/IP20 (from the operator side, with busbar and terminal covers)						
Power loss of the switch disconnector at I_{th}	W	7	12	22	22	33	72	170
Main conductor connections								
Busbar systems, max. dimensions (w x t)	mm	25 x 9	25 x 9	45 x 10	45 x 10	40 x 12	40 x 12	40 x 15
Cable lug, max. conductor cross-section (stranded)	mm ²	35	35	70	120	150	2 x 150 or 1 x 240	2 x 240
Tightening torque	Nm	6 ... 7.5	6 ... 7.5	7 ... 10	18 ... 22	35 ... 45	35 ... 45	35 ... 45
Terminal screws		M6	M6	M6	M8	M10	M10	M10
Protective conductor connections								
Flat bars	mm	--	--	--	--	20 x 2.5	20 x 2.5	20 x 2.5
Cable lug, max. conductor cross-section (stranded)	mm ²	--	--	--	--	70	120	120

1) Technical specifications for approval on request.

2) Configuring note: Max. permissible operating temperature at connections 100 °C.

3) With 3KA58 for operation -25 °C ... +35 °C, 570 A at 55 °C.

4) Only with 3NA38, 3NA32 or 3ND18, 3ND12 fuses (otherwise only 105 kA/50 kA).

5) 3ND1 switchgear protection fuse.

6) AC-23B

7) 220 V DC (L1 and L3 series-connected) or 110 V DC (one conducting path) at DC-23A.

8) At 440 V $L/R = 4$ ms, at 220 V $L/R = 15$ ms.

9) At 440 V DC-22A, at 220 V DC-23A.

Switch Disconnectors, Main and EMERGENCY-STOP Switches

SENTRON 3KA, 3KE Switch Disconnectors up to 1000 A

General data

Standards	IEC 60947-1, IEC 60947-3, VDE 0660 Part 107				
	Type	3KE42	3KE43	3KE44	3KE45
Rated uninterrupted current I_U	A	250	400	630	1000
Rated insulation voltage U_i	V	AC 1000, DC 1200			
Rated impulse voltage U_{imp}	kV	8	8	8	8
Rated operational voltage U_e					
AC 50 Hz/60 Hz	V	690			
DC	V	440 (3 conducting paths series-connected)			
	V	220 (2 conducting paths series-connected)			
Rated short-circuit making capacity I_{cm} At 50 Hz/60 Hz 690 V AC (peak value)	kA	35	35	60	60
Rated short-circuit making capacity with upstream fuses At 50 Hz/60 Hz 690 V AC (peak value)	kA	105	105	105	84
Rated conditional short-circuit current with upstream fuses At 50 Hz/60 Hz 690 V AC (rms value)	A	50	50	50	40
Maximum permissible let-through I^2t value	kA ² s	2150	2150	5400	19000
Permissible let-through current of an upstream circuit breaker					
At 50 Hz/60 Hz 690 V AC (peak value)	kA	35	35	60	60
Max. rated current I_n of the fuse	A	400	400	630	1000
Permissible let-through current of the fuses (peak value)	kA	38	38	60	75
Switching capacity (infeed from the top or bottom)					
At 400 V AC					
• Breaking current I_C (rms value at p.f. = 0.35)	A	1000	1000	2520	2520
• Rated operational current I_e at					
- AC-21A	A	250	400	630	1000
- AC-22A	A	250	330	630	800
- AC-23A	A	125	125	315	315
At 500 V AC					
• Breaking current I_C (rms value at p.f. = 0.35)	A	1000	1000	2520	2520
• Rated operational current I_e at					
- AC-21A	A	250	400	630	1000
- AC-22A	A	250	330	630	800
- AC-23A	A	125	125	315	315
At 690 V AC					
• Breaking current I_C (rms value at p.f. = 0.35)	A	1000	1000	2520	2520
• Rated operational current I_e at					
- AC-21A	A	250	400	630	1000
- AC-22A	A	250	330	630	800
- AC-23A	A	125	125	315	315
At 440 V DC (3 conducting paths series-connected)					
• Breaking current I_C (L/R = 5 ms)	A	1000	1000	2520	2520
• Rated operational current I_e at					
- DC-21A	A	250	400	630	1000
- DC-22A	A	250	250	630	630
Rated short-time current I_{cw} (1 s current, rms value)	kA	12.5	12.5	21	21
Permissible ambient temperature	°C	-25 ... +55 for operation			
	°C	-50 ... +80 when stored			
Mechanical endurance , operating cycles		10000			
Degree of protection		IP00			
Power loss of the switch disconnector at I_{th}	W	15	33	78	180
Main conductor connections					
Busbar systems, max. dimensions (w x t)	mm	25 x 10	25 x 10	2 x 40 x 10	2 x 40 x 10
Cable lug, max. conductor cross-section (stranded)	mm ²	2 x 150	2 x 150, 1 x 240	2 x 240	2 x 240

Switch Disconnectors, Main and EMERGENCY-STOP Switches

SENTRON 3KA, 3KE Switch Disconnectors up to 1000 A

Floor mounting

Application




3KA switch disconnectors are implemented as main switches and EMERGENCY-STOP switches for normal switching duty and isolation of main circuits and auxiliary circuits. Another field of application is the switching of induction motors and other loads in the event of maintenance and repair.

Main and EMERGENCY-STOP switches are manually operated switch disconnectors according to IEC 60947-3 and VDE 0660 Part 107 (EN 60947-3) and comply with the conditions for switch disconnectors and the requirements of the machinery directive EN 60204-1.

Selection and ordering data

All switch disconnectors with degree of protection IP00

Conductor connecting screws are generally included in the scope of supply.

Rated uninterrupted current I_u	DT	Order No.	Price per PU	PU (UNIT, SET, M)	PS*	PG	Weight per PU approx. kg	
Complete versions with 8UC7 door-coupling rotary operating mechanism (black handle)								
3-pole for motor loads and for power distribution								
63	B	3KA50 30-1GE01		1	1 unit	103	1.444	
80	B	3KA51 30-1GE01		1	1 unit	103	1.403	
125	B	3KA52 30-1GE01		1	1 unit	103	2.383	
160	B	3KA53 30-1GE01		1	1 unit	103	2.426	
250	B	3KA55 30-1GE01		1	1 unit	103	5.475	
400	B	3KA57 30-1GE01		1	1 unit	103	5.556	
630	B	3KA58 30-1GE01		1	1 unit	103	6.128	
4-pole¹⁾ for power distribution								
63	B	3KA50 40-1GE01		1	1 unit	103	2.498	
80	B	3KA51 40-1GE01		1	1 unit	103	2.540	
125	B	3KA52 40-1GE01		1	1 unit	103	2.490	
160	B	3KA53 40-1GE01		1	1 unit	103	2.458	
250	B	3KA55 40-1GE01		1	1 unit	103	6.038	
400	B	3KA57 40-1GE01		1	1 unit	103	5.154	
630	B	3KA58 40-1GE01		1	1 unit	103	6.595	
Basic switch versions without handle								
3-pole for motor loads and for power distribution								
	63	B	3KA50 30-1AE01		1	1 unit	103	0.946
	80	B	3KA51 30-1AE01		1	1 unit	103	0.918
	125	B	3KA52 30-1AE01		1	1 unit	103	1.880
	160	▶	3KA53 30-1AE01		1	1 unit	103	2.028
	250	B	3KA55 30-1AE01		1	1 unit	103	4.514
	400	B	3KA57 30-1AE01		1	1 unit	103	4.630
	630	B	3KA58 30-1AE01		1	1 unit	103	5.151
3KA53 30-1AE01								
4-pole¹⁾ for power distribution								
	63	B	3KA50 40-1AE01		1	1 unit	103	2.100
	80	B	3KA51 40-1AE01		1	1 unit	103	2.112
	125	B	3KA52 40-1AE01		1	1 unit	103	2.090
	160	B	3KA53 40-1AE01		1	1 unit	103	2.240
	250	C	3KA55 40-1AE01		1	1 unit	103	5.042
	400	B	3KA57 40-1AE01		1	1 unit	103	5.195
	630	B	3KA58 40-1AE01		1	1 unit	103	5.740
3KA53 40-1AE01								
8UC7 EMERGENCY-STOP door-coupling rotary operating mechanisms (red handle, yellow indicator plate) for basic switch versions without handle								
3-pole for motor loads and for power distribution								
	63	C	8UC71 21-3BB10		1	1 unit	103	0.200
	80	C	8UC71 21-3BB10		1	1 unit	103	0.200
	125	C	8UC72 22-3BB20		1	1 unit	103	0.200
	160	C	8UC72 22-3BB20		1	1 unit	103	0.200
	250	C	8UC73 23-3BB30		1	1 unit	103	0.200
	400	C	8UC73 23-3BB30		1	1 unit	103	0.200
	630	C	8UC73 23-3BB30		1	1 unit	103	0.200
8UC71 21-3BB10								
4-pole¹⁾ for power distribution								
63	C	8UC72 22-3BB20		1	1 unit	103	0.200	
80	C	8UC72 22-3BB20		1	1 unit	103	0.200	
125	C	8UC72 22-3BB20		1	1 unit	103	0.200	
160	C	8UC72 22-3BB20		1	1 unit	103	0.200	
250	C	8UC73 23-3BB30		1	1 unit	103	0.200	
400	C	8UC73 23-3BB30		1	1 unit	103	0.200	
630	C	8UC73 23-3BB30		1	1 unit	103	0.200	


¹⁾ Rated values reduced in the event of strong harmonics caused by frequency converter operation.

For 8UC7 EMERGENCY-STOP door-coupling rotary operating mechanisms (red handle, yellow indicator plate), see Accessories.

Switch Disconnectors, Main and EMERGENCY-STOP Switches

SENTRON 3KA, 3KE Switch Disconnectors up to 1000 A

Floor mounting

Rated uninterrupted current I_u	DT	3-pole, assembly kit for mounting in control cabinet side panel Assembly kits (IP40) Comprising: Lockable handle and three terminal covers for the infeed side	PU (UNIT, SET, M)	PS*	PG	Weight per PU approx.	
A		Order No.	Price per PU			kg	
Black handle							
 <p>3KA53 30-1AE01 with 3KX3 536-2AA</p>	63	B	3KX3 516-2AA	1	1 unit	103 0.591	
	80	B	3KX3 516-2AA	1	1 unit	103 0.591	
	125	B	3KX3 536-2AA	1	1 unit	103 0.843	
	160	B	3KX3 536-2AA	1	1 unit	103 0.843	
	250	B	3KX3 556-2AA	1	1 unit	103 1.560	
	400	B	3KX3 556-2AA	1	1 unit	103 1.560	
	630	B	3KX3 556-2AA	1	1 unit	103 1.560	
	EMERGENCY-STOP red handle						
	63	B	3KX3 516-2BA	1	1 unit	103 0.584	
80	B	3KX3 516-2BA	1	1 unit	103 0.584		
125	B	3KX3 536-2BA	1	1 unit	103 0.860		
160	B	3KX3 536-2BA	1	1 unit	103 0.860		
250	B	3KX3 556-2BA	1	1 unit	103 1.590		
400	B	3KX3 556-2BA	1	1 unit	103 1.590		
630	B	3KX3 556-2BA	1	1 unit	103 1.590		

Switch Disconnectors, Main and EMERGENCY-STOP Switches

SENTRON 3KA, 3KE Switch Disconnectors up to 1000 A

Floor mounting

All switch disconnectors with degree of protection IP00
with high speed closing and opening
conductor connecting screws are generally included in the scope of supply

Rated uninterrupted current I_U	DT	3-pole, operating mechanism and actuation from the front Direct operating mechanisms	PU (UNIT, SET, M)	PS*	PG	Weight per PU approx.
A		Order No.	Price per PU			kg
Complete versions with black handle						
250	B	3KE42 30-0BA	1	1 unit	103	4.210
400	B	3KE43 30-0BA	1	1 unit	103	4.178
630	B	3KE44 30-0BA	1	1 unit	103	7.184
1000	B	3KE45 30-0BA	1	1 unit	103	7.838
Basic switch versions without handle						
250	B	3KE42 30-0AA	1	1 unit	103	3.879
400	B	3KE43 30-0AA	1	1 unit	103	3.870
630	B	3KE44 30-0AA	1	1 unit	103	6.915
1000	B	3KE45 30-0AA	1	1 unit	103	7.427
EMERGENCY-STOP red handles + coupling sockets for basic switch versions without handle						
250	B	8UC93 71 + 3KX2 210-0H	1	1 unit	103	0.146
	B	3KX2 210-0H	1	1 unit	103	0.236
400	B	8UC93 71 + 3KX2 210-0H	1	1 unit	103	0.146
	B	3KX2 210-0H	1	1 unit	103	0.236
630	B	8UC93 75 + 3KX2 210-0H	1	1 unit	103	0.165
	B	3KX2 210-0H	1	1 unit	103	0.236
1000	B	8UC93 75 + 3KX2 210-0H	1	1 unit	103	0.165
	B	3KX2 210-0H	1	1 unit	103	0.236
Complete versions with 8UC7 door-coupling rotary operating mechanism (black handle)						
250	B	3KE42 30-0GA	1	1 unit	103	5.032
400	B	3KE43 30-0GA	1	1 unit	103	5.041
630	B	3KE44 30-0GA	1	1 unit	103	7.885
1000	B	3KE45 30-0GA	1	1 unit	103	8.532
Basic switch versions without handle						
250	B	3KE42 30-0AA	1	1 unit	103	3.879
400	B	3KE43 30-0AA	1	1 unit	103	3.870
630	B	3KE44 30-0AA	1	1 unit	103	6.915
1000	B	3KE45 30-0AA	1	1 unit	103	7.427
8UC7 EMERGENCY-STOP door-coupling rotary operating mechanisms (red handle, yellow indicator plate) for basic switch versions without handle						
250, 400, 630, 1000	C	8UC73 24-3BB44	1	1 unit	103	0.200

* You can order this quantity or a multiple thereof.

Switch Disconnectors, Main and EMERGENCY-STOP Switches

SENTRON 3KA, 3KE Switch Disconnectors up to 1000 A

Floor mounting

Rated uninterrupted current I_u	DT	3-pole, rear operating mechanism and actuation	PU (UNIT, SET, M)	PS*	PG	Weight per PU approx.
A		Order No.	Price per PU			kg
Basic switch versions without handle						
Direct operating mechanisms						
250	B	3KE42 30-0CA	1	1 unit	103	5.306
400	B	3KE43 30-0CA	1	1 unit	103	5.030
630	C	3KE44 30-0CA	1	1 unit	103	7.395
1000	C	3KE45 30-0CA	1	1 unit	103	7.990
Direct operating mechanisms (lockable)						
250	B	3KE42 30-0CA	1	1 unit	103	5.306
400	B	3KE43 30-0CA	1	1 unit	103	5.030
630	C	3KE44 30-0CA	1	1 unit	103	7.395
1000	C	3KE45 30-0CA	1	1 unit	103	7.990
Handles (black) + masking plates + display plates (silver) for basic switch versions without handle						
Direct operating mechanisms						
250	B	8UC93 70	1	1 unit	103	0.128
	A	+ 8UB95 30	1	1 unit	103	0.028
	A	+ 8UC96 31-0B	1	1 unit	103	0.011
400	B	8UC93 70	1	1 unit	103	0.128
	A	+ 8UB95 30	1	1 unit	103	0.028
	A	+ 8UC96 31-0B	1	1 unit	103	0.011
630	B	8UC93 74	1	1 unit	103	0.145
	A	+ 8UB95 30	1	1 unit	103	0.028
	A	+ 8UC96 31-0B	1	1 unit	103	0.011
1000	B	8UC93 74	1	1 unit	103	0.145
	A	+ 8UB95 30	1	1 unit	103	0.028
	A	+ 8UC96 31-0B	1	1 unit	103	0.011
Direct operating mechanisms (lockable)						
250	B	8UC93 70	1	1 unit	103	0.128
	B	+ 8UC95 63	1	1 unit	103	0.271
	A	+ 8UC96 31-0B	1	1 unit	103	0.011
400	B	8UC93 70	1	1 unit	103	0.128
	B	+ 8UC95 63	1	1 unit	103	0.271
	A	+ 8UC96 31-0B	1	1 unit	103	0.011
630	B	8UC93 74	1	1 unit	103	0.145
	B	+ 8UC95 63	1	1 unit	103	0.271
	A	+ 8UC96 31-0B	1	1 unit	103	0.011
1000	B	8UC93 74	1	1 unit	103	0.145
	B	+ 8UC95 63	1	1 unit	103	0.271
	A	+ 8UC96 31-0B	1	1 unit	103	0.011

* You can order this quantity or a multiple thereof.

Switch Disconnectors, Main and EMERGENCY-STOP Switches

SENTRON 3KA, 3KE Switch Disconnectors up to 1000 A

Floor mounting

Rated uninterrupted current I_U	DT	3-pole, rear operating mechanism and actuation	PU (UNIT, SET, M)	PS*	PG	Weight per PU approx.
A		Order No.	Price per PU			kg
EMERGENCY-STOP red handles + masking plates + display plates (yellow) for basic switch versions without handle						
Direct operating mechanisms						
250	B	8UC93 71	1	1 unit	103	0.146
	A	+ 8UB95 30	1	1 unit	103	0.028
	A	+ 8UC96 33-0B	1	1 unit	103	0.011
400	B	8UC93 71	1	1 unit	103	0.146
	A	+ 8UB95 30	1	1 unit	103	0.028
	A	+ 8UC96 33-0B	1	1 unit	103	0.011
630	B	8UC93 75	1	1 unit	103	0.165
	A	+ 8UB95 30	1	1 unit	103	0.028
	A	+ 8UC96 33-0B	1	1 unit	103	0.011
1000	B	8UC93 75	1	1 unit	103	0.165
	A	+ 8UB95 30	1	1 unit	103	0.028
	A	+ 8UC96 33-0B	1	1 unit	103	0.011
Direct operating mechanisms (lockable)						
250	B	8UC93 71	1	1 unit	103	0.146
	B	+ 8UC95 63	1	1 unit	103	0.271
	A	+ 8UC96 33-0B	1	1 unit	103	0.011
400	B	8UC93 71	1	1 unit	103	0.146
	B	+ 8UC95 63	1	1 unit	103	0.271
	A	+ 8UC96 33-0B	1	1 unit	103	0.011
630	B	8UC93 75	1	1 unit	103	0.165
	B	+ 8UC95 63	1	1 unit	103	0.271
	A	+ 8UC96 33-0B	1	1 unit	103	0.011
1000	B	8UC93 75	1	1 unit	103	0.165
	B	+ 8UC95 63	1	1 unit	103	0.271
	A	+ 8UC96 33-0B	1	1 unit	103	0.011
3-pole, rear rotary operating mechanisms (lockable)						
Door-coupling rotary operating mechanisms (lockable)						
A		Order No.	Price per PU			kg
Basic switch versions without handle						
250	B	3KE42 30-OCA	1	1 unit	103	5.306
400	B	3KE43 30-OCA	1	1 unit	103	5.030
630	C	3KE44 30-OCA	1	1 unit	103	7.395
1000	C	3KE45 30-OCA	1	1 unit	103	7.990
8UC7 door-coupling rotary operating mechanisms (black handle) for basic switch versions without handle						
250, 400, 630, 1000	C	8UC73 14-1BB44	1	1 unit	103	0.200
8UC7 EMERGENCY-STOP door-coupling rotary operating mechanisms (red handle, yellow indicator plate) for basic switch versions without handle						
250, 400, 630, 1000	C	8UC73 24-3BB44	1	1 unit	103	0.200

* You can order this quantity or a multiple thereof.

Switch Disconnectors, Main and EMERGENCY-STOP Switches

SENTRON 3KA, 3KE Switch Disconnectors up to 1000 A

Molded-plastic enclosure

Benefits

- Lockable with 3 padlocks
- Generous terminal compartment
- Degree of protection IP65
- Maintenance-free
- Easy mounting


Application

Our master and EMERGENCY-STOP switches provide absolute safety, even during maintenance and repair work. All-round safety for people and machines.

With their high degree of protection IP65, they can even withstand dust and water spray, providing unparalleled safety in the

building and industrial installations as well as the food and chemical industry. Even with the enclosure open, they comply with protection class 2. IP20 is the minimum!

Selection and ordering data

Main contacts	Auxiliary contacts	P/AC-23A		I_u	Conductor cross-section of main conductor/PEN	DT	Order No.	Price per PU	PU (UNIT, SET, M)	PS*	PG	Weight per PU approx.	
		At 380 ... 400 V	At 660/690 V										kW
Main control switches complete with rotary operating mechanism, black¹⁾													
	3	--	65	110	125	35/35 ²⁾	C	8HP2 707		1	1 unit	046	5.240
			80	150	160	120/70 ²⁾	C	8HP2 711		1	1 unit	046	8.039
			132	220	250	150/70 ²⁾	C	8HP2 712		1	1 unit	046	12.242
			200	375	400	2 × 150 or 1 × 240/120	C	8HP2 717		1	1 unit	046	12.378
			350	375	630	2 × 240/120	C	8HP2 718		1	1 unit	046	13.050
			315	315	800 ³⁾	2 × 240/240	C	8HP2 738		1	1 unit	046	14.290
EMERGENCY-STOP switches complete with rotary operating mechanism, red/yellow¹⁾													
	3	--	65	110	125	35/35 ²⁾	C	8HP2 747		1	1 unit	046	5.217
			80	150	160	120/70 ²⁾	C	8HP2 748		1	1 unit	046	7.992
			132	220	250	150/70 ²⁾	C	8HP2 761		1	1 unit	046	12.340
			200	375	400	2 × 150 or 1 × 240/120	C	8HP2 762		1	1 unit	046	12.354
			350	375	630	2 × 240/120	C	8HP2 763		1	1 unit	046	12.875
			315	315	800 ³⁾	2 × 240/240	C	8HP2 758		1	1 unit	046	14.329

¹⁾ With PE-/ground or N terminal.

²⁾ For a fifth conductor, the same terminal can be fitted additionally.

³⁾ At ambient temperatures up to 35 °C.

Switch Disconnectors, Main and EMERGENCY-STOP Switches

SENTRON 3KA, 3KE Switch Disconnectors up to 1000 A

Accessories

Selection and ordering data

	DT	Order No.	Price per PU	PU (UNIT, SET, M)	PS*	PG	Weight per PU approx. kg
3KA50 30/3KA51 30							
		Terminal cover					
		For 3-pole devices (1 set = 6 units)	▶ 3KX3 552-3DA01	1	1 unit	103	0.077
		For 4-pole devices (1 set = 8 units)	B 3KX3 552-3DB01	1	1 unit	103	0.102
		Door-coupling rotary operating mechanisms IP65					
		Black handle, shaft 300 mm	C 8UC71 11-1BB10	1	1 unit	103	0.200
		EMERGENCY-STOP (yellow/red), shaft 300 mm	C 8UC71 21-3BB10	1	1 unit	103	0.200
		Operating mechanisms for fixed mounting	▶ 3KX3 516-1AA	1	1 unit	103	0.088
		Black handle, shaft 250 mm					
		Extension shaft 300 mm long	B 8UC60 31	1	1 unit	103	0.068
		Extension shaft 600 mm long	B 8UC60 81	1	1 unit	103	0.136
		Shaft connecting pieces	B 8UC60 21	1	1 unit	103	0.031
		Auxiliary switches 1 NO + 1 NC ¹⁾	C 3SB14 00-0A	1	1 unit	102	0.020
3KA50 40/3KA51 40/3KA52/3KA53							
		Terminal cover					
		For 3KA52 3-pole devices (1 set = 6 units)	▶ 3KX3 552-3DA01	1	1 unit	103	0.077
		For 3KA53	▶ 3KX3 553-3DA01	1	1 unit	103	0.147
		For 3KA52 4-pole devices (1 set = 8 units)	B 3KX3 552-3DB01	1	1 unit	103	0.102
		For 3KA53	B 3KX3 553-3DB01	1	1 unit	103	0.170
		Door-coupling rotary operating mechanisms IP65					
		Black handle, shaft 300 mm	C 8UC72 12-1BB20	1	1 unit	103	0.200
		EMERGENCY-STOP (yellow/red), shaft 300 mm	C 8UC72 22-3BB20	1	1 unit	103	0.200
		Operating mechanisms for fixed mounting	▶ 3KX3 536-1AA	1	1 unit	103	0.155
		Black handle, shaft 250 mm					
		Extension shaft 300 mm long	B 8UC60 32	1	1 unit	103	0.132
		Extension shaft 600 mm long	B 8UC60 82	1	1 unit	103	0.265
		Shaft connecting pieces	B 8UC60 22	1	1 unit	103	0.023
		Auxiliary switches 1 NO + 1 NC ¹⁾	C 3SB14 00-0A	1	1 unit	102	0.020
		20 ms leading 1 NO + 1 NC	B 3KX3 552-3EA01	1	1 unit	103	0.019
3KA55/3KA57/3KA58							
		Terminal cover					
		For 3-pole devices (1 set = 6 units)	▶ 3KX3 557-3DA01	1	1 unit	103	0.277
		For 4-pole devices (1 set = 8 units)	B 3KX3 557-3DB01	1	1 unit	103	0.362
		Door-coupling rotary operating mechanisms IP65					
		Black handle, shaft 300 mm	C 8UC73 13-1BB30	1	1 unit	103	0.200
		EMERGENCY-STOP (yellow/red), shaft 300 mm	C 8UC73 23-3BB30	1	1 unit	103	0.200
		Operating mechanisms for fixed mounting	▶ 3KX3 176-1E	1	1 unit	103	0.285
		Black handle, shaft 250 mm					
		Extension shaft 300 mm long	C 8UC60 33	1	1 unit	103	0.217
		Extension shaft 600 mm long	B 8UC60 83	1	1 unit	103	0.430
		Shaft connecting pieces	B 8UC60 23	1	1 unit	103	0.085
		Auxiliary switches 1 NO + 1 NC ¹⁾	C 3SB14 00-0A	1	1 unit	102	0.020
		20 ms leading 1 NO + 1 NC ¹⁾	B 3KX3 552-3EA01	1	1 unit	103	0.019

¹⁾ For more 3SB14 00-0. contact blocks with other contact types, see Chapter 9 "Pushbuttons and Indicator Lights".

Switch Disconnectors, Main and EMERGENCY-STOP Switches

SENTRON 3KA, 3KE Switch Disconnectors up to 1000 A

Accessories

Version	DT	Order No.	Price per PU	PU (UNIT, SET, M)	PS*	PG	Weight per PU approx. kg
---------	----	-----------	--------------	-------------------	-----	----	--------------------------

3KE42/3KE43



3KX2 210-0D

Changeover switches

Changeover switches with interruption

Switch I ON – Switch II OFF
Switch I OFF – Switch II OFF
Switch I ON – Switch II ON

B	3KX2 210-0D	1	1 unit	103	2.442
---	-------------	---	--------	-----	-------

Door-coupling rotary operating mechanisms IP65

Twin handle (black), shaft 300 mm

C	8UC74 14-1BF44	1	1 unit	103	0.200
---	----------------	---	--------	-----	-------

Direct operating mechanisms

Twin handle (black) for fixed mounting

B	8UC93 81	1	1 unit	103	0.264
---	----------	---	--------	-----	-------

Changeover switches without interruption

Switch I ON – Switch II OFF
Switch I ON – Switch II ON
Switch I ON – Switch II ON

B	3KX2 210-0E	1	1 unit	103	2.448
---	-------------	---	--------	-----	-------

Door-coupling rotary operating mechanisms IP65

Twin handle (black), shaft 300 mm

C	8UC74 14-1FG44	1	1 unit	103	0.200
---	----------------	---	--------	-----	-------

Direct operating mechanisms

Twin handle (black) for fixed mounting

B	8UC93 81	1	1 unit	103	0.264
---	----------	---	--------	-----	-------

Parallel switches

Switch I ON – Switch II ON
Switch I OFF – Switch II OFF

C	3KX2 250-1A	1	1 unit	103	0.750
---	-------------	---	--------	-----	-------

Door-coupling rotary operating mechanisms IP65

Twin handle (black), shaft 300 mm

C	8UC74 14-1BB44	1	1 unit	103	0.200
---	----------------	---	--------	-----	-------

EMERGENCY-STOP door-coupling rotary operating mechanisms IP65

Twin handle (red), shaft 300 mm

C	8UC74 24-3BB44	1	1 unit	103	0.200
---	----------------	---	--------	-----	-------

Direct operating mechanisms

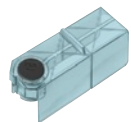
Twin handle (black) for fixed mounting

B	8UC93 81	1	1 unit	103	0.264
---	----------	---	--------	-----	-------

Further accessories

Terminal cover
(1 set = 6 units)

▶	3KX3 557-3DA01	1	1 unit	103	0.277
---	----------------	---	--------	-----	-------



3KX3 557-3DA01

Door-coupling rotary operating mechanisms IP65

Black handle, shaft 300 mm

C	8UC73 14-1BB44	1	1 unit	103	0.200
---	----------------	---	--------	-----	-------

EMERGENCY-STOP (yellow/red), shaft 300 mm

C	8UC73 24-3BB44	1	1 unit	103	0.200
---	----------------	---	--------	-----	-------

Extension shaft 300 mm long

B	8UC60 34	1	1 unit	103	0.315
---	----------	---	--------	-----	-------

Extension shaft 600 mm long

B	8UC60 84	1	1 unit	103	0.640
---	----------	---	--------	-----	-------

Auxiliary switches with switching cam
1 NO + 1 NC (complete mounting kit)

B	3KX2 231-1A	1	1 unit	103	0.049
---	-------------	---	--------	-----	-------



3KX2 231-1A

Grounding brackets

B	3KX2 252-1A	1	1 unit	103	0.049
---	-------------	---	--------	-----	-------

Arc chute

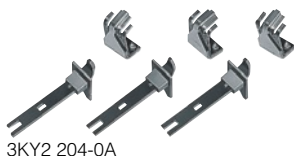
(spare part with 3 arc-splitter assemblies)

B	3KY2 202-0B	1	1 unit	103	0.640
---	-------------	---	--------	-----	-------

Arcing contacts

(spare part with 3 fixed and 3 movable contacts)

B	3KY2 204-0A	1	1 unit	103	0.202
---	-------------	---	--------	-----	-------



3KY2 204-0A

Switch Disconnectors, Main and EMERGENCY-STOP Switches

SENTRON 3KA, 3KE Switch Disconnectors up to 1000 A

Accessories

Version	DT	Order No.	Price per PU	PU (UNIT, SET, M)	PS*	PG	Weight per PU approx. kg
3KE44/3KE45							
<i>Changeover switches</i>							
Changeover switches with interruption							
Switch I ON – Switch II OFF Switch I OFF – Switch II OFF Switch I ON – Switch II ON	B	3KX2 210-0D		1	1 unit	103	2.442
Door-coupling rotary operating mechanisms IP65 Twin handle (black), shaft 300 mm							
	C	8UC74 14-1BF44		1	1 unit	103	0.200
Direct operating mechanisms Twin handle (black) for fixed mounting							
	B	8UC93 81		1	1 unit	103	0.264
Changeover switches without interruption							
Switch I ON – Switch II OFF Switch I ON – Switch II ON Switch I ON – Switch II ON	B	3KX2 210-0E		1	1 unit	103	2.448
Door-coupling rotary operating mechanisms IP65 Twin handle (black), shaft 300 mm							
	C	8UC74 14-1FG44		1	1 unit	103	0.200
Direct operating mechanisms Twin handle (black) for fixed mounting							
	B	8UC93 81		1	1 unit	103	0.264
<i>Parallel switches</i>							
Switch I ON – Switch II ON Switch I OFF – Switch II OFF	C	3KX2 250-1A		1	1 unit	103	0.750
Door-coupling rotary operating mechanisms IP65 Twin handle (black), shaft 300 mm							
	C	8UC74 14-1BB44		1	1 unit	103	0.200
EMERGENCY-STOP door-coupling rotary operating mechanisms IP65 Twin handle (red), shaft 300 mm							
	C	8UC74 24-3BB44		1	1 unit	103	0.200
Direct operating mechanisms Twin handle (black) for fixed mounting							
	B	8UC93 81		1	1 unit	103	0.264
<i>Further accessories</i>							
Terminal cover (top and bottom)							
	B	3KX2 252-0C		1	1 unit	103	0.424
Door-coupling rotary operating mechanisms IP65							
Black handle, shaft 300 mm	C	8UC73 14-1BB44		1	1 unit	103	0.200
EMERGENCY-STOP (yellow/red), shaft 300 mm	C	8UC73 24-3BB44		1	1 unit	103	0.200
Extension shaft 300 mm long							
	B	8UC60 34		1	1 unit	103	0.315
Extension shaft 600 mm long							
	B	8UC60 84		1	1 unit	103	0.640
Auxiliary switches 1 NO + 1 NC (complete mounting kit)							
	B	3KX2 231-1A		1	1 unit	103	0.049
Grounding brackets							
	B	3KX2 252-1A		1	1 unit	103	0.049
Arc chute (spare part with 3 arc-splitter assemblies)							
	B	3KY2 232-0A		1	1 unit	103	1.040
Arcing contacts (spare part with 3 fixed and 3 movable contacts)							
	B	3KY2 234-0A		1	1 unit	103	0.105



3KX2 210-0D



3KX2 231-1A



3KY2 232-0A