

Powermate Range pitch 7.00

Powermate Range pitch 7.00	Plug and socket connectors with leaf spring connection	I.2
	Plug and socket connectors with TOP connection	I.6

Plug and socket connectors with leaf spring connection

STVS S



Tried-and-tested power connector system for straight conductor-conductor connections. Counterpart also available with optional solder pins for PCB connection. Versatile thanks to mounting bracket for fixing to enclosure and screw locking, plus extensive accessories.

- 0.32 - 4.00 mm² (IEC) / 22 - 12 AWG (UL)
- 1000 V (IEC) / 600 V (UL)
- 32 A (IEC) / 25 A (UL)

Technical data

Rated data to IEC 60664-1 / IEC 61984

Clamping range, max.	mm ²	0.32...4
Solid H05(07) V-U	mm ²	0.5...4
Stranded H07 V-R	mm ²	
Flexible H05(07) V-K	mm ²	0.5...4
Flexible with ferrule	mm ²	0.5...4
Ferrule with plastic collar	mm ²	0.5...4
Stripping length	mm	9
Screwdriver blade	mm	0.6 x 3.5
according to norm		DIN 5264
Tightening torque range	Nm	0.5...0.6

Rated current

at ambient temperature	20°C	40°C
	A	30

Overvoltage category

	III	III	II
--	-----	-----	----

Pollution severity

	3	2	2
--	---	---	---

Rated voltage	V	500	500	1000
---------------	---	-----	-----	------

Rated impulse voltage	kV	6	6	6
-----------------------	----	---	---	---

UL 1977 rated data - E92202

Rated voltage	V	600
---------------	---	-----

Rated current	A	25
---------------	---	----

AWG conductor		22-12
---------------	--	-------

@ CSA C22.2 rated data - LR12400 B

	B	C	D
--	---	---	---

Rated voltage	V	300	300
---------------	---	-----	-----

Rated current	A	25	25
---------------	---	----	----

AWG conductor		20-12
---------------	--	-------

Material data

Type of insulating material	Wemid (PA)
-----------------------------	------------

Flammability class acc. UL94	V-0
------------------------------	-----

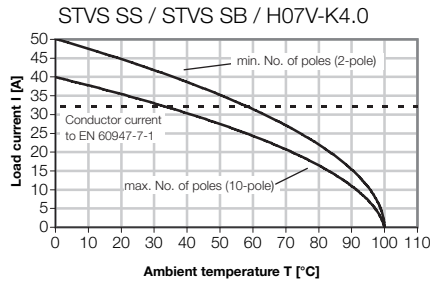
Contact base material	Cu alloy
-----------------------	----------

Material of contact surface	silver-plated
-----------------------------	---------------

Information

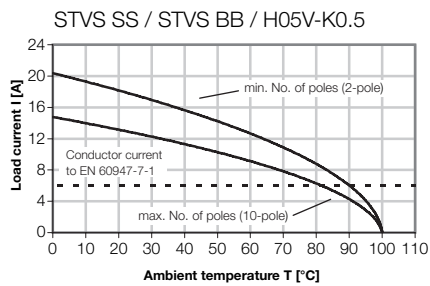
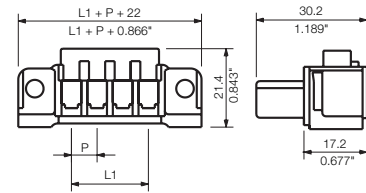
- Additional colours on request
- Rated current related to rated cross-section and min. No. of poles.
- Crimp form A for wire end ferrules with PZ 6/5 crimping tool are recommended for the largest cable sizes.
- Wire end ferrule without plastic collar to DIN 46228 pt 1
- Wire end ferrule with plastic collar to DIN 46228 pt 4
- P on drg. = pitch
- Rated data refer only to the component itself. Clearance and creepage distances to other components are to be designed in accordance with the relevant application standards.

Derating curve



STVS SB

Socket connectors



Ordering data

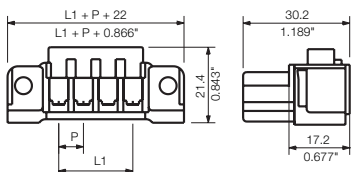
Colour

Pitch 7.00 mm

Poles	L1 mm	(inch)	Qty.	Order No.	Order No.
2	7.00	(0.276)	10		1611960000
3	14.00	(0.551)	10		1611990000
4	21.00	(0.827)	10		1612020000
5	28.00	(1.102)	10		1612050000
6	35.00	(1.378)	10		1612080000
7	42.00	(1.654)	10		1612110000
8	49.00	(1.929)	10		1612140000
9	56.00	(2.205)	10		1612170000
10	63.00	(2.480)	10		1612200000

STVS SS

Male connectors



Accessories

Coding

See chapter accessories



Clip-in lugs

See chapter accessories



Marking system

See chapter accessories



Cable grip

See chapter accessories



Screwdriver

See chapter accessories
Order No. 9008390000



Ordering data

Colour	grey

Pitch 7.00 mm		Qty.	Order No.	Order No.
Poles	L1 mm (inch)			
2	7.00 (0.276)	10	1611950000	1611950000
3	14.00 (0.551)	10	1611980000	1611980000
4	21.00 (0.827)	10	1612010000	1612010000
5	28.00 (1.102)	10	1612040000	1612040000
6	35.00 (1.378)	10	1612070000	1612070000
7	42.00 (1.654)	10	1612100000	1612100000
8	49.00 (1.929)	10	1612130000	1612130000
9	56.00 (2.205)	10	1612160000	1612160000
10	63.00 (2.480)	10	1612190000	1612190000

STWS S



Tried-and-tested power connector system for 90° conductor-conductor connections. Counterpart also available with optional solder pins for PCB connection. Versatile thanks to mounting bracket for fixing to enclosure and screw locking, plus extensive accessories.

- 0.32 - 4.00 mm² (IEC) / 22 - 12 AWG (UL)
- 1000 V (IEC) / 600 V (UL)
- 32 A (IEC) / 25 A (UL)

Technical data

Rated data to IEC 60664-1 / IEC 61984

Clamping range, max.	mm ²	0.32...4
Solid H05(07) V-U	mm ²	0.5...4
Stranded H07 V-R	mm ²	
Flexible H05(07) V-K	mm ²	0.5...4
Flexible with ferrule	mm ²	0.5...4
Ferrule with plastic collar	mm ²	0.5...4
Stripping length	mm	9
Screwdriver blade according to norm	mm	0.6 x 3.5
Tightening torque range	Nm	DIN 5264 0.5...0.6

Rated current at ambient temperature

	20°C	40°C
A	32	32

Overvoltage category

	III	III	II
III	3	2	2

Pollution severity

	3	2	2
3	3	2	2

Rated voltage	V	500	500	1000
Rated impulse voltage	kV	6	6	6

UL 1977 rated data - E92202

Rated voltage	V	600
Rated current	A	25
AWG conductor		22-12

CSA C22.2 rated data - LR12400 B

	B	C	D
Rated voltage	V	300	300
Rated current	A	25	25
AWG conductor		20-12	

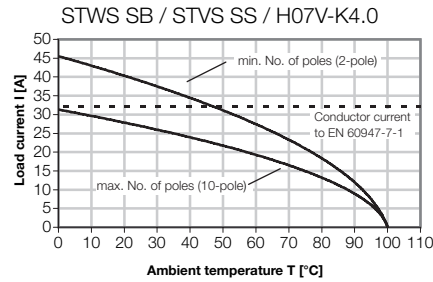
Material data

Type of insulating material	Wemid (PA)
Flammability class acc. UL94	V-0
Contact base material	Cu alloy
Material of contact surface	silver-plated

Information

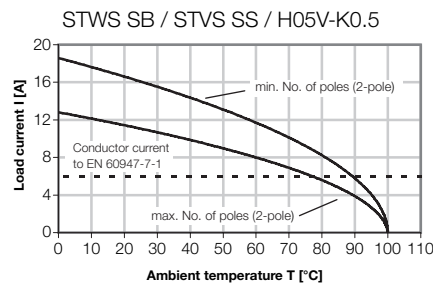
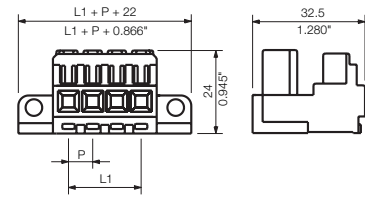
- Additional colours on request
- Rated current related to rated cross-section and min. No. of poles.
- Crimp form A for wire end ferrules with PZ 6/5 crimping tool are recommended for the largest cable sizes.
- Wire end ferrule without plastic collar to DIN 46228 pt 1
- Wire end ferrule with plastic collar to DIN 46228 pt 4
- P on drg. = pitch
- Rated data refer only to the component itself. Clearance and creepage distances to other components are to be designed in accordance with the relevant application standards.

Derating curve



STWS SB

Socket connectors



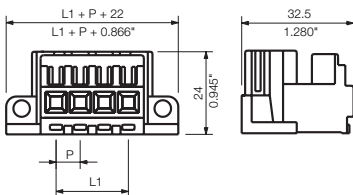
Ordering data

Colour		grey

Pitch 7.00 mm					
Poles	L1 mm (inch)	Qty.	Order No.	Order No.	
2	7.00 (0.276)	10		1612930000	
3	14.00 (0.551)	10		1612940000	
4	21.00 (0.827)	10		1612950000	
5	28.00 (1.102)	10		1612960000	
6	35.00 (1.378)	10		1612970000	
7	42.00 (1.654)	10		1612980000	
8	49.00 (1.929)	10		1612990000	
9	56.00 (2.205)	10		1613000000	
10	63.00 (2.480)	10		1613010000	

STWS SS

Male connectors



Ordering data

Colour: grey

Pitch 7.00 mm

Poles	L1 mm (inch)	Qty.	Order No.	Order No.
2	7.00 (0.276)	10		1612840000
3	14.00 (0.551)	10		1612850000
4	21.00 (0.827)	10		1612860000
5	28.00 (1.102)	10		1612870000
6	35.00 (1.378)	10		1612880000
7	42.00 (1.654)	10		1612890000
8	49.00 (1.929)	10		1612900000
9	56.00 (2.205)	10		1612910000
10	63.00 (2.480)	10		1612920000

Accessories

Coding

See chapter accessories



Clip-in lugs

See chapter accessories



Marking system

See chapter accessories



Screwdriver

See chapter accessories
Order No. 9008390000



Mounting foot

See chapter accessories



Plug and socket connectors with TOP connection

STVS T



Tried-and-tested power connector system for straight conductor-conductor connections, with TOP system for space-saving conductor connection. Counterpart also available with optional solder pins for PCB connection. Versatile thanks to mounting bracket for fixing to enclosure and screw locking, plus extensive accessories.

- 0.32 - 2.5 mm² (IEC) / 22 - 14 AWG (UL)
- 1000 V (IEC) / 600 V (UL)
- 24 A (IEC) / 17 A (UL)

Technical data

Rated data to IEC 60664-1 / IEC 61984

Clamping range, max.	mm ²	0.32...2.5	
Solid H05(07) V-U	mm ²	0.5...2.5	
Stranded H07 V-R	mm ²		
Flexible H05(07) V-K	mm ²	0.5...2.5	
Flexible with ferrule	mm ²	0.5...2.5	
Ferrule with plastic collar	mm ²	0.5...2.5	
Stripping length	mm	15	
Screwdriver blade	mm	0.6 x 3.5	
according to norm		DIN 5264	
Tightening torque range	Nm	0.5...0.6	

Rated current

at ambient temperature		20°C	40°C
	A	24	20

Overvoltage category

	III	III	II
--	-----	-----	----

Pollution severity

	3	2	2
--	---	---	---

Rated voltage	V	500	500	1000
---------------	---	-----	-----	------

Rated impulse voltage	kV	6	6	6
-----------------------	----	---	---	---

UL 1977 rated data - E92202

Rated voltage	V	600
---------------	---	-----

Rated current	A	17
---------------	---	----

AWG conductor		22-14
---------------	--	-------

@ CSA C22.2 rated data - LR12400 B

	B	C	D
--	---	---	---

Rated voltage	V	300	300
---------------	---	-----	-----

Rated current	A	17	17
---------------	---	----	----

AWG conductor		20-14
---------------	--	-------

Material data

Type of insulating material	Wemid (PA)
-----------------------------	------------

Flammability class acc. UL94	V-0
------------------------------	-----

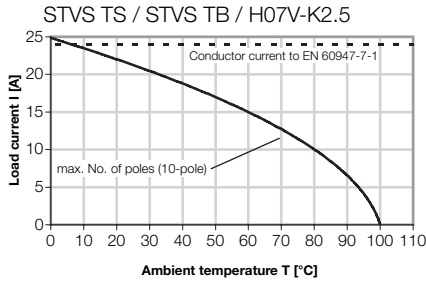
Contact base material	CuZn
-----------------------	------

Material of contact surface	silver-plated
-----------------------------	---------------

Information

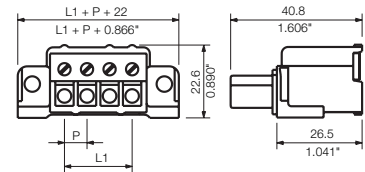
- Additional colours on request
- Rated current related to rated cross-section and min. No. of poles.
- Wire end ferrule without plastic collar to DIN 46228 pt 1
- Wire end ferrule with plastic collar to DIN 46228 pt 4
- P on drg. = pitch
- Rated data refer only to the component itself. Clearance and creepage distances to other components are to be designed in accordance with the relevant application standards.

Derating curve



STVS TB

Socket connectors



Ordering data

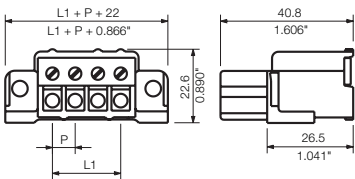
Colour

Pitch 7.00 mm

Poles	L1 mm	(inch)	Qty.	Order No.	Order No.
2	7.00	(0.276)	10		1612230000
3	14.00	(0.551)	10		1612260000
4	21.00	(0.827)	10		1612290000
5	28.00	(1.102)	10		1612320000
6	35.00	(1.378)	10		1612350000
7	42.00	(1.654)	10		1612380000
8	49.00	(1.929)	10		1612410000
9	56.00	(2.205)	10		1612440000
10	63.00	(2.480)	10		1612470000

STVS TS

Male connectors



Ordering data

Colour

Pitch 7.00 mm

Poles	L1 mm	(inch)	Qty.	Order No.	Order No.
2	7.00	(0.276)	10		1612220000
3	14.00	(0.551)	10		1612250000
4	21.00	(0.827)	10		1612280000
5	28.00	(1.102)	10		1612310000
6	35.00	(1.378)	10		1612340000
7	42.00	(1.654)	10		1612370000
8	49.00	(1.929)	10		1612400000
9	56.00	(2.205)	10		1612430000
10	63.00	(2.480)	10		1612460000

Accessories

Coding

See chapter accessories



Clip-in lugs

See chapter accessories



Marking system

See chapter accessories



Screwdriver

See chapter accessories
Order No. 9008390000



Mounting foot

See chapter accessories



